

Siberian Breed Seminar

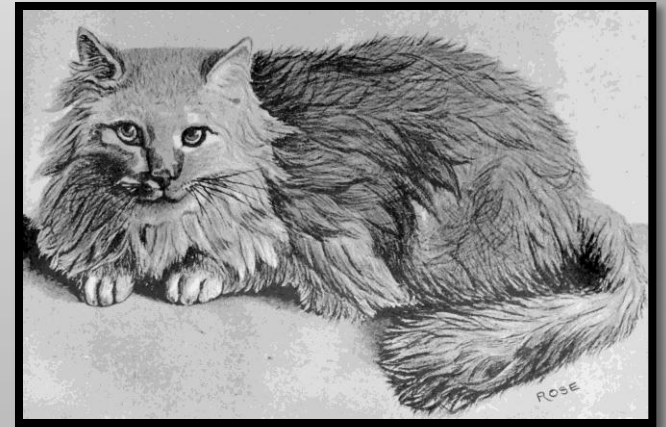
Cats of the Taiga

September 2012



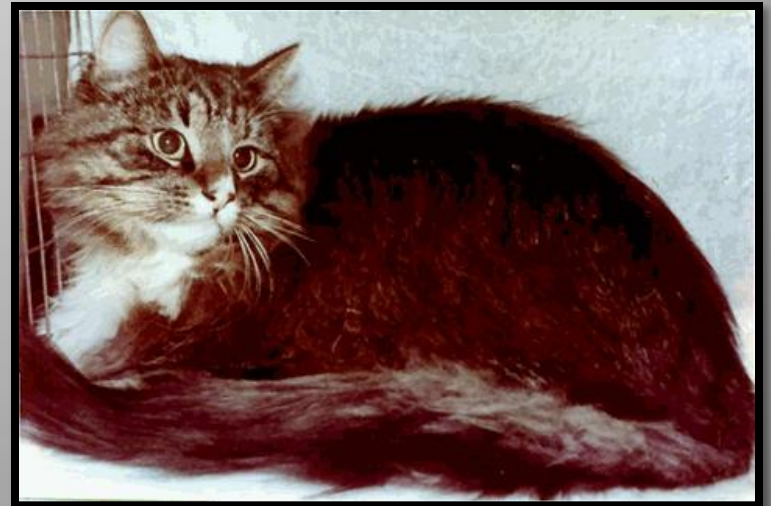
Early References

- 1000
 - 1st written reference
- 1700s
 - First cat show
- 1800s
 - 1884 Madison Square Garden
 - 1889 Harrison Weir
 - 1898 John Jennings
- 1900
 - 1st Photo in Winslow



The Beginnings in Russia

- Russian cat fancy
 - Early 1980s started records
 - First standard created
 - Kotofei Cat Club in Moscow
- Foundation cats – 2 key sires
 - Mars
 - Blue Lynx Point & white
 - Roman
 - Brown Tabby & White
- 1989 All Union Cat Show
 - 12 Siberians entered



The Siberian Comes to the USA



- **1990 First Imports**

- Elizabeth Terrell – Starpoint

- Ofelia, Naina, Kaliostro
- TAIGA formed to promote the breed.
TAIGA members were key to
Siberian acceptance into TICA.

- **TICA Recognition**

- 1992 Standard accepted
- 1996 Championship status
- 1997 Colorpoints accepted in NBC
- 2002 Colorpoints in Championship

- **1997 First colorpoints imported**

- Dana Osborn – Willowbrook

- Ustin El Magrib of Willowbrook
 - Seal Lynx Point Male
- Roksana Babyan of Willowbrook
 - Seal Tortie Point Female
- 1998 First colorpoint litter born

Siberian Milestone Awards in TICA

1997-8 First Season in TICA

First Siberian SGC

- SGC Troika Zahar Ahlmazovich, January 1998

First Regional Winners – Five!!

- SGC Tribblecurl Pyotr Olinovich of QT, 9th Best Cat MP (Best Siberian)
- SGC Troika Zahar Ahlmazovich, 8th Best Cat MA (2nd Best Siberian)
- QGC Max, 9th Best Cat EN (3rd Best Siberian)
- TGC Karapouz, 14th Best Cat EN (4th Best Siberian)
- GRC Tribblecurl Deemeeknatash, 7th Best Cat GP (5th Best Siberian)



1998-9 Second Season in TICA

First Siberian SGCA

- SGCA Crystalrose Deema Sashovich, August 1998

First International Winners

- IW SGC Treskuchiy Sibirskiy Moroz Mur, 5th Best Cat
- IW SGC Troika Zahar Ahlmazovich, 10th Best Cat



2000-01 Fourth Season in TICA

First Siberian Cat of the Year

- IW SGC Treskuchiy Sibirskiy Moroz Mur

– 2002-03 First Season in TICA for Colorpoints

First colorpoint SGC

- IW SGC Cooncreole Oblieo of Almaz



General Description

The Siberian is a medium-large cat with the overall appearance of excellent physical condition, strength and power, modified by a sweet facial expression. The general impression of the body is one of circles and roundness. Siberians are slow to mature, taking as long as 5 years to reach full maturity. Females are considerably smaller than males, and allowances should be made when comparing females and young cats to the standard. Size is secondary to type.

Siberian Standard Points

HEAD. 40 points

Shape. 12

Ears. 5

Eyes. 5

Chin. 3

Muzzle 10

Profile. 3

Neck. 2

COAT/COLOR. 15 points

Length.. . . . 5

Texture. 5

Pattern. 3

Color.. . . . 2

BODY. 35 points

Torso. 10

Legs 5

Feet. 3

Tail. 5

Boning. 6

Musculature. 6

OTHER. 10 points

Balance. 5

Condition. 3

Temperament. 2

HEAD. 40 points

Shape. 12

Ears. 5

Eyes. 5

Chin. 3

Muzzle 10

Profile. 3

Neck. 2

Head: Shape - 12 Points

- The Siberian's head is shaped as a slightly modified wedge, with rounded contours. It is medium to large in size, and in good proportion to the body. The head is broader at the top of the skull and narrows slightly to a full-rounded muzzle. The cheekbones are neither high set nor prominent.



Head Shape: Two Views



Head Shape: Rounded contours, slightly modified wedge



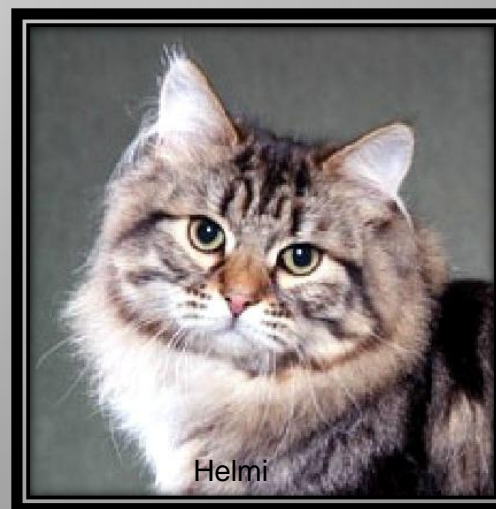
Head: Ears - 5 Points



Valeriy Sinitsin

The Siberian's ears are medium-large, rounded and tilted slightly forward. They should be set as much on the sides of the head as on top. Ideal position is one to one and one half ear widths apart. The hair over the back of the ear is short and thin. From the middle of the ear, the furnishings become longer and cover the base of the ear. Lynx tipping is allowable.

Ears: Medium-large, rounded, tilted, with good spacing



Head: Eyes - 5 Points

Large, almost round, with the outer corner angled slightly towards the base of the ear. The eyes should be set more than one eye's width apart. There is no relationship between eye color and coat color/pattern.

PENALIZE: almond shaped eyes



Eyes: Shape, Size, Angle and Distance Apart



Head: Chin - 3 Points

The chin is well-rounded but not protruding, and is in line with the nose.



Chin



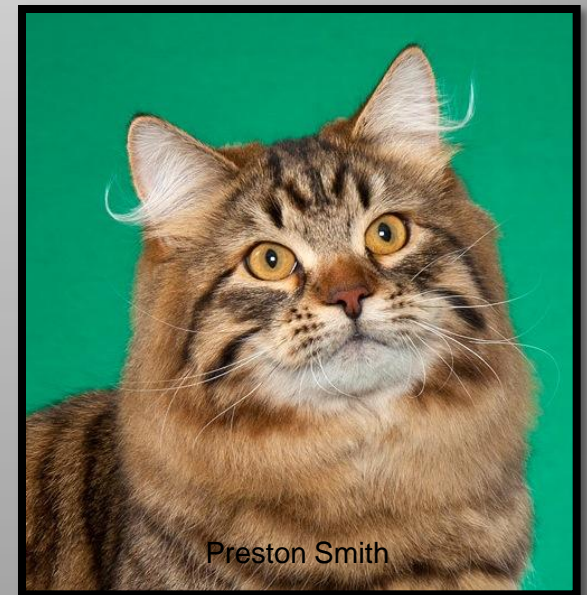
Head: Muzzle - 10 Points



The muzzle is short in length, full and rounded. There is a slight muzzle curvature, but the transition between the side of the head and the muzzle is gentle and inconspicuous.

Penalize: Narrow muzzle.

Muzzle



Head: Profile - 3 Points

The top of the head is almost flat, with a slight nose curvature of a gentle slope from the forehead to the nose and a slight convex curvature before the tip when viewed in profile.

PENALIZE: Straight profile



Profile



Head: Neck - 2 Points

Rounded, substantial and well-muscled.

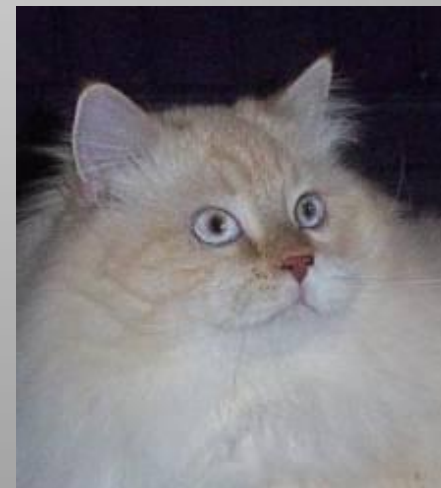


Imperfect Head Shapes

Penalize: almond eyes/straight profile



Head not rounded, narrow muzzle- total of 22 points/40



Weak/small chin

tall/close ears

small /incorrect shape eyes

BODY. 35 points

Torso. 10

Legs 5

Feet. 3

Tail. 5

Boning. 6

Musculature. 6

Body: Torso - 10 Points

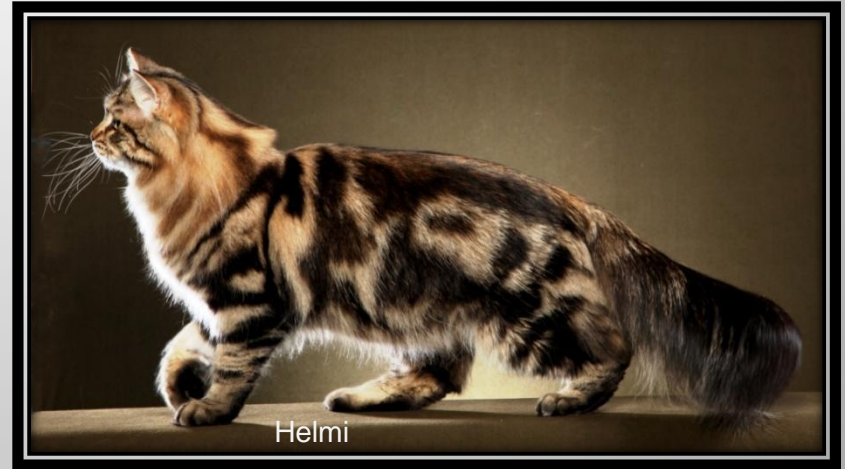
The body is medium in length, and well-muscled with the back arched slightly higher than the shoulders, with a barrel-shaped, firm belly giving the sensation of solid weight (which appears with age).



PENALIZE: long body

Torso

Medium length, well muscled, barrel shaped belly, back arched higher than shoulder.



Body: Legs - 5 points, Feet - 3 Points



Legs: Medium in length. The hind legs are slightly longer than the front, and should have substantial boning.

Feet: The feet are big and rounded, with toe tufts desirable

PENALIZE: very long legs.

Legs & Feet



Body: Tail 5 Points



The tail is medium in length, wide at the base, tapering slightly to a blunt tip. The tail should be somewhat shorter than the length of the body.

PENALIZE: long tail

Tail



Body: Boning - 6 Points

Musculature - 6 Points



Boning: Substantial.

Musculature:
Substantial, powerful.

PENALIZE: delicate boning,
non-muscular body

ALLOWANCES: Because the Siberian is a slow maturing breed, physical structure should be taken into consideration when judging kittens and young adults.

Boning & Musculature



Incorrect Body Form



Long body



Slight musculature



Long tail

COAT/COLOR. 15 points

Length.. . . . 5

Texture.. . . . 5

Pattern.. . . . 3

Color.. . . . 2

Coat: Length 5 points

This is a moderately long to longhaired cat with a triple coat. The hair on the shoulder blades and lower part of the chest being thick and slightly shorter. There should be an abundant ruff setting off the head. There is a tight undercoat (in mature cats), thicker in cold weather. Allow for warm weather coats. The hair may thicken to curls on the belly and britches, but a wavy coat is not characteristic.



ALLOWANCES: Because the Siberian is a slow maturing breed, coat should be taken into consideration when judging kittens and young adults.

Coat Length





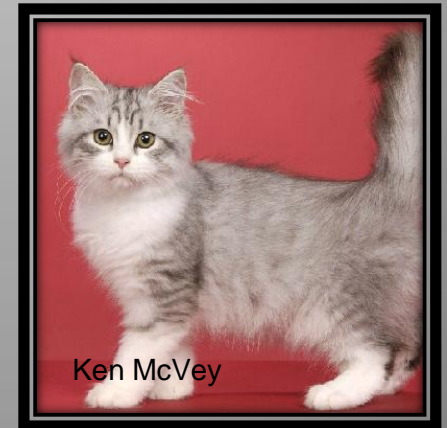
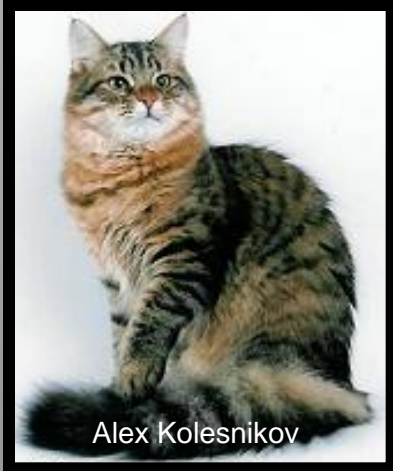
Coat: Texture - 5 points Color - 2 points, Pattern- 2 points

Texture: Varies coarse to soft, varying according to color.

Color: All traditional and pointed colors and combinations are accepted with or without white. White or off-white allowed on chin, breast and stomach of tabbies; white allowed in most areas. Strong colors are desirable, but secondary to type.

Allowances: Buttons, spots, and lockets.

Pattern: Clear patterns are desirable, but secondary to type.



Other

OTHER. 10 points

Balance. 5

Well-proportioned

Condition. 3

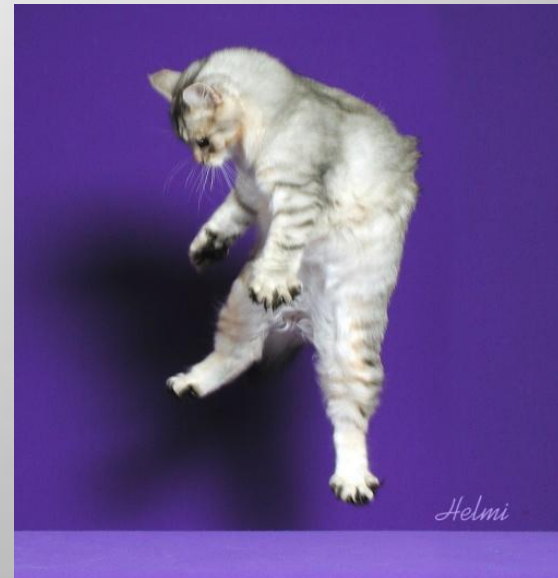
Excellent health in good
overall condition

Temperament. 2

Must be unchallenging

WITHHOLD ALL AWARDS (WW):

Evidence of illness, poor health,
emaciation, visible tail fault.



Siberians at Play



That's all. It's Time to Play

